



ACF-110W

ACF-130W

ACF-180W

ASAHI POLYSULFONE HEMOFILTER

CUREFLO™

.....
For **C**ontinuous **R**enal **R**eplacement Therapy (**CRRT**)

 ASAHIKASEI KURARAY MEDICAL CO., LTD.

Indication

CUREFLO™ is intended for patients with renal failure who also suffer from severe complications, such as multiple organ failure or imperfections in their cardiac and circulatory organs, such as cardiac insufficiency and edema, who are difficult to treat with the intermittent dialysis therapy. CUREFLO™ is used to correct and purify body fluid through continuous hemofiltration (normally taking more than 10 hrs.).

Features of CUREFLO™

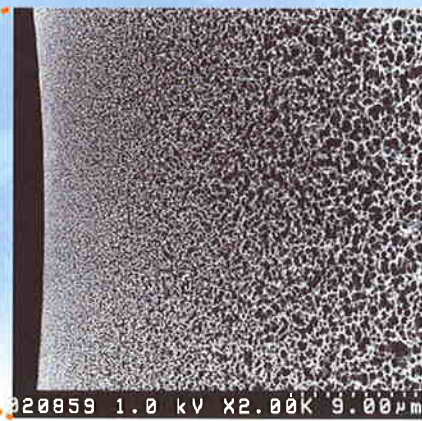
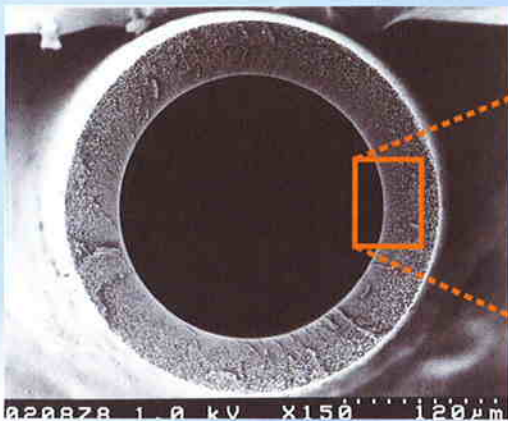
Asahi's high flux polysulfone membrane specially developed for CRRT with :

- High permeability and sharp cut-off curve from microporous gradient structure
- Superior biocompatibility
- Low albumin loss
- Long filter life

High permeability and sharp cut-off curve

Microporous gradient structure (dense and homogeneous inside surface and porous outside area) provides "High permeability" and "Sharp cut-off" features.

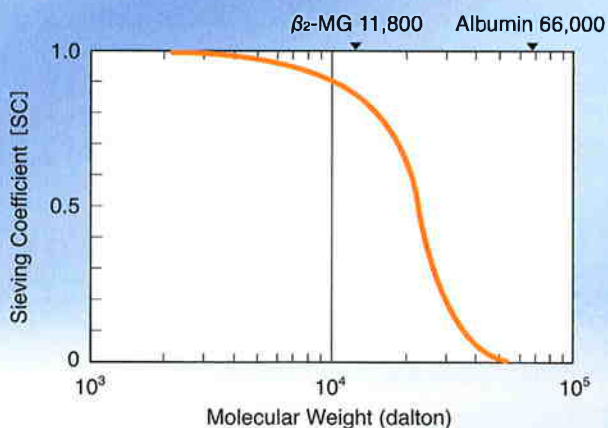
Membrane structure



Inside

Outside

Cut-off curve



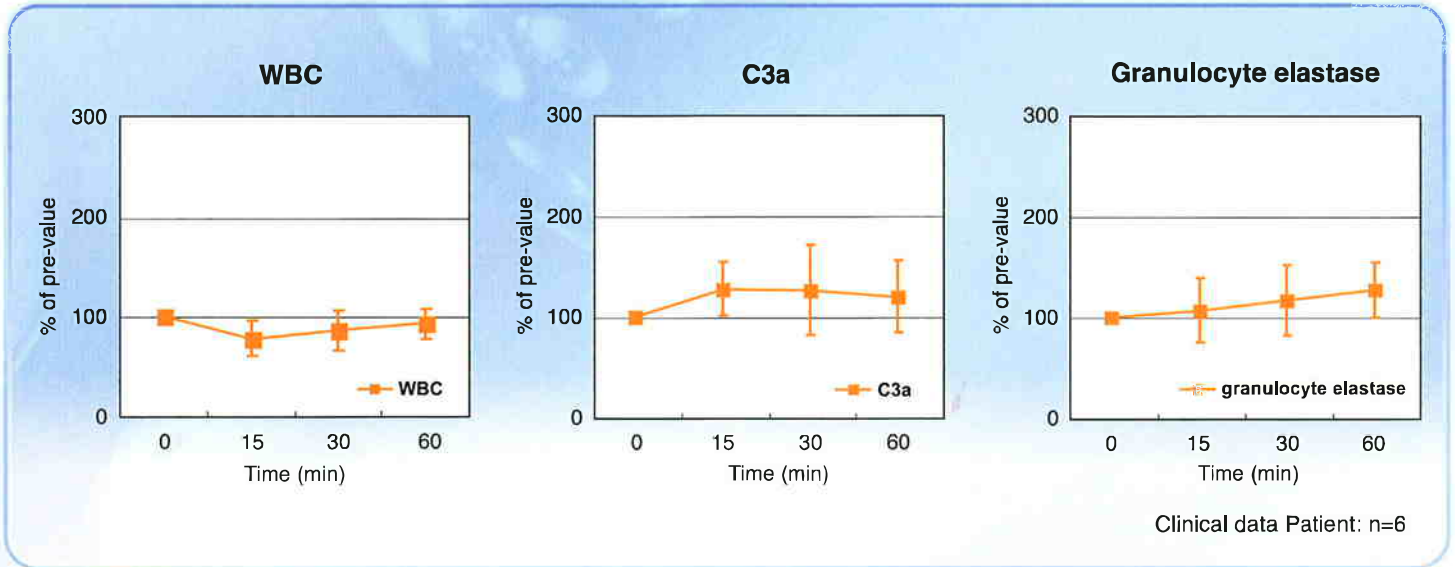
Excellent SC of low molecular weight proteins



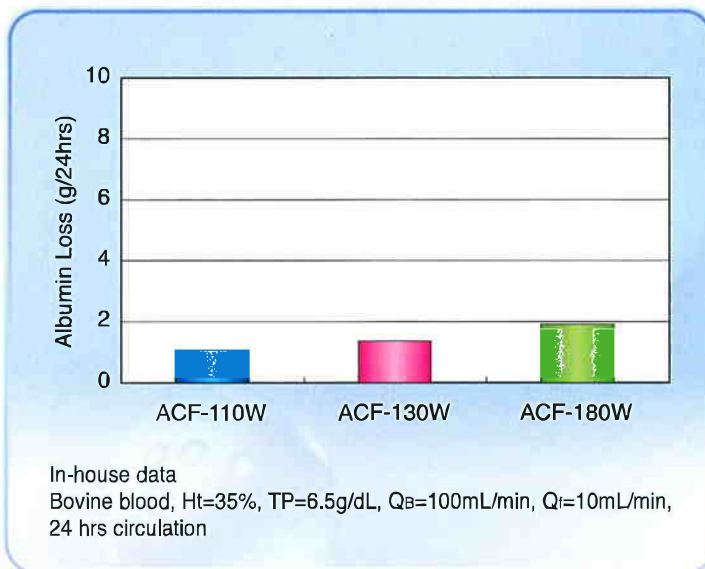
In-house data: Product: ACF-110W
Bovine blood, Ht=35%, TP=6.5g/dL, Q_B=100mL/min, Q_F=10mL/min, n=1

Superior biocompatibility

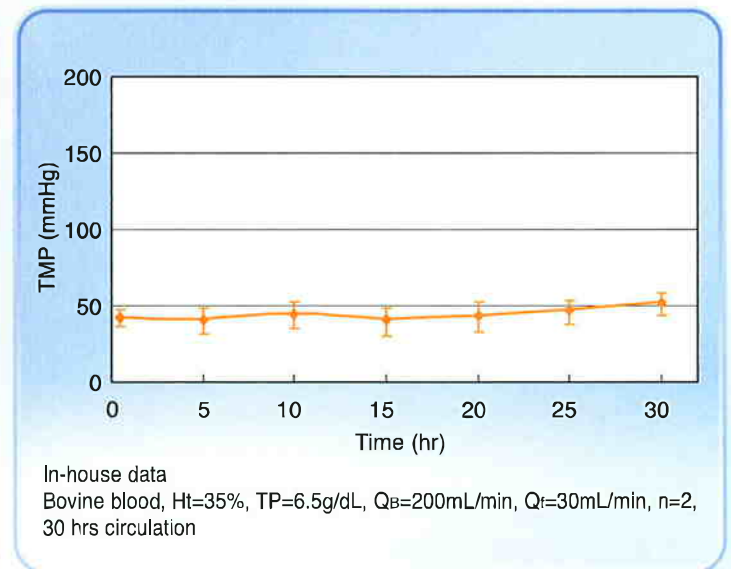
The change of WBC, C3a and granulocyte elastase is very small during treatment.



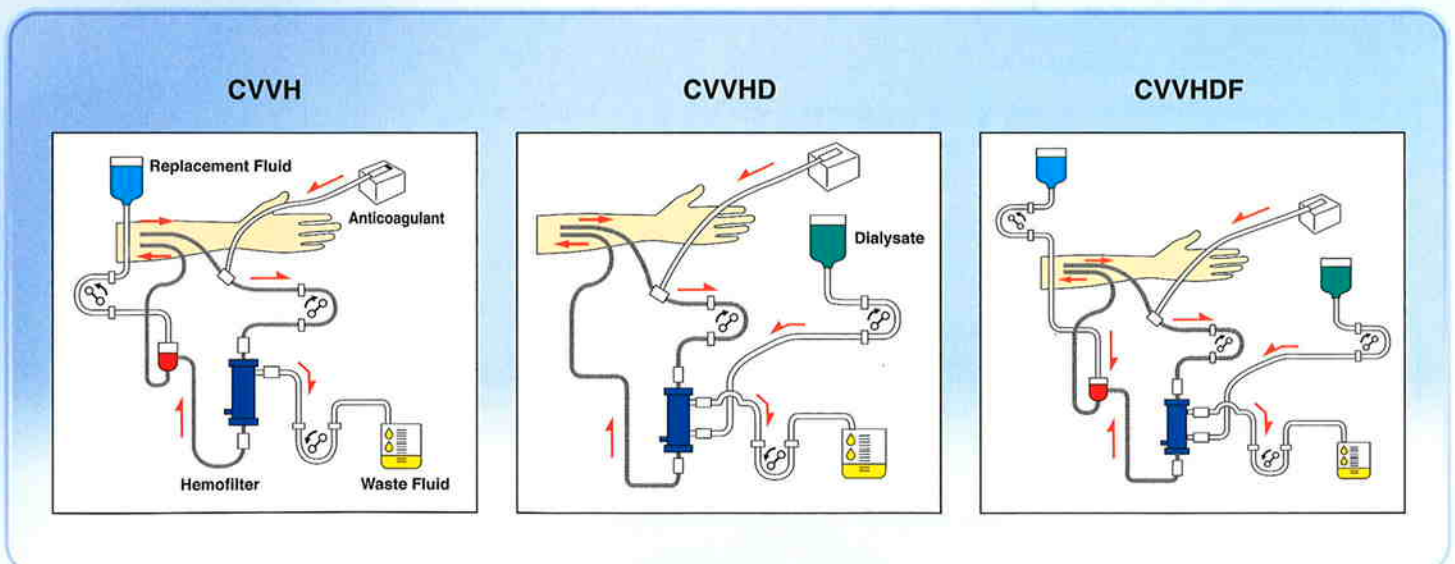
Low albumin loss



Long filter life



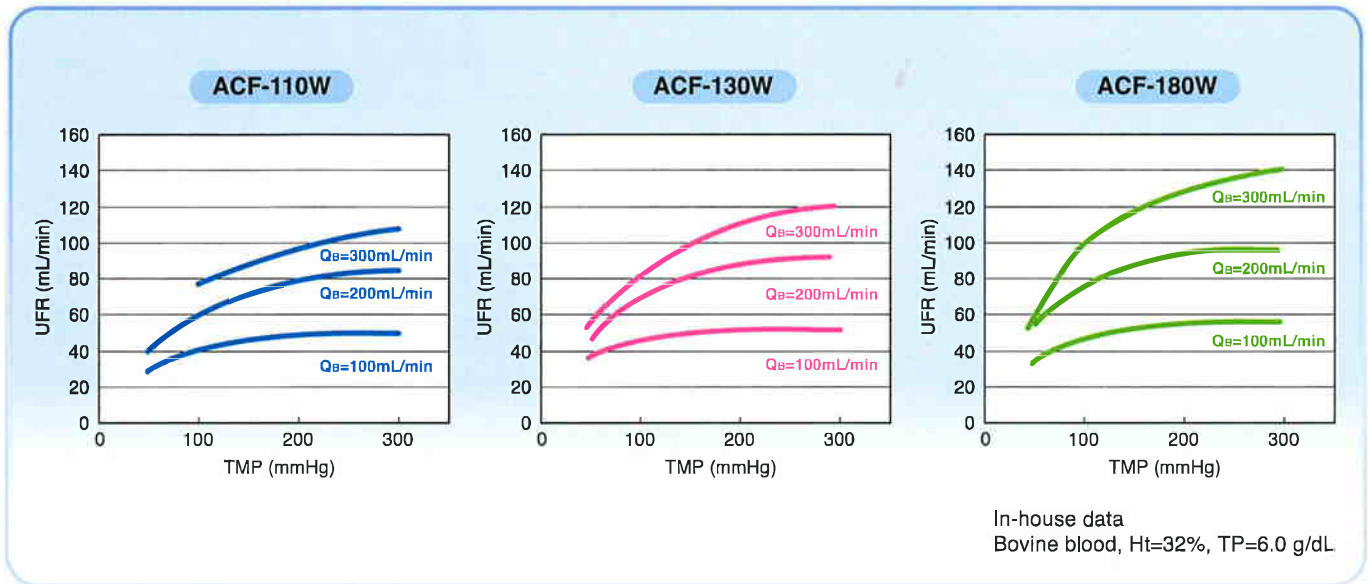
Circuit diagram



CUREFLO™



■ Ultrafiltration



■ Specification

Specification		ACF-110W	ACF-130W	ACF-180W
Hollow fiber	Material	Polysulfone		
	Inside Diameter	200 μm		
	Wall Thickness	45 μm		
Effective Surface Area		1.1 m ²	1.3 m ²	1.8 m ²
Priming Volume		66 mL	80 mL	105 mL
Max. TMP		66 kPa (500 mmHg)		
Sterilization		Gamma-ray		



ASAHIKASEI KURARAY MEDICAL CO., LTD.
 9-1, Kanda Mitoshicho, Chiyoda-ku, Tokyo 101-8482, Japan
 Telephone: +81-3-3259-7724 Facsimile: +81-3-3259-7580
 URL: <http://www.asahikasei-kuraray-medical.com>

CE
0086

Represented in Europe by:
ASAHIKASEI MEDICAL EUROPE GmbH
 Lyoner Strasse 44-48, 60528 Frankfurt am Main, Germany
 Telephone: +49-69-66371 500 Facsimile: +49-69-666 5193